


A photograph of the Ballarat City Council building, a grand stone structure with a prominent clock tower. The building is set against a clear blue sky. In the foreground, there are trees with bare branches, a statue on a pedestal, and several cars parked along the street. The text "Learning at City of Ballarat" is overlaid in white, sans-serif font across the middle of the image.

# Learning at City of Ballarat

Where we are at now and where we are going.

A large orange shape on the left side of the slide, consisting of a rectangle with a quarter-circle cutout on its right side.

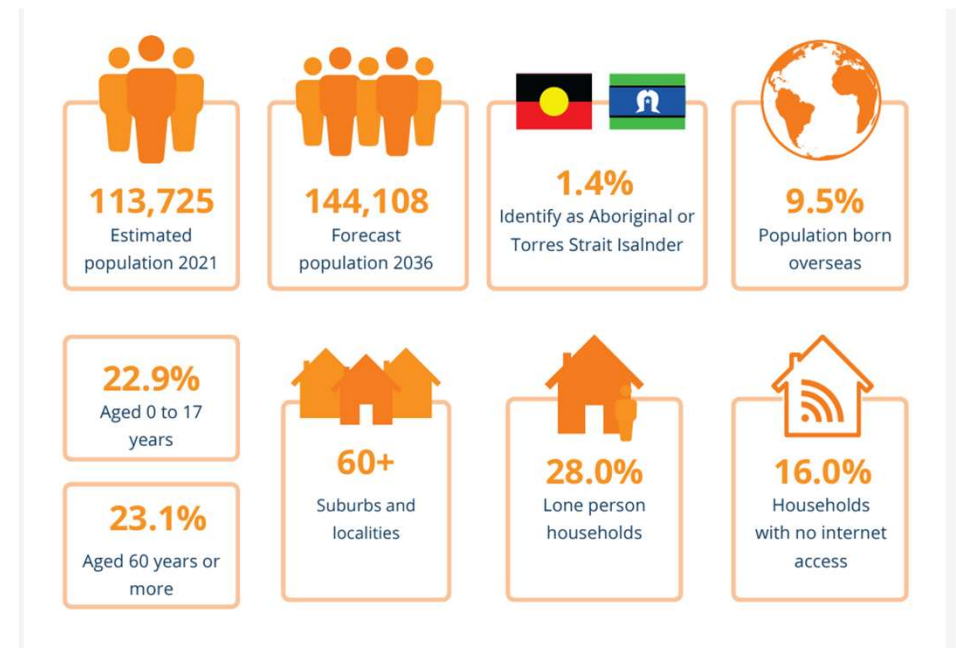
# Background

- Regional city about an hour from Melbourne
  - Known for our Gold Rush era history as evident in the large number of 1850s-1880s heritage buildings
  - Lies on Wadawurrung and Dja Dja Warrung country, with strong First Nations community
- 
- A series of four short, curved yellow lines in the bottom right corner, arranged in a diagonal sequence from bottom-left to top-right.

## Demographics

- Period of accelerated growth – sped up due to Covid
- Growing diversity
- High percentage of single person households
- Significant pockets of both highly advantaged communities and highly disadvantaged pockets
- High levels of chronic illness

OFFICIAL



OFFICIAL



# Education and Learning

- Public and Private schools
- Universities
- TAFE and Vocational learning
- Informal learning facilities
  - Council operated learning facilities – libraries, gallery, museum
  - Neighbourhood houses
  - Others

# An expanding library and learning service



**Newly refurbished  
and expanded  
central library**



**Plans for vastly  
expanded  
Wendouree Library**



**Plans for new  
library at western  
growth zone  
(Delacombe)**



**Community Hubs**

Existing location Lucas –  
co-located with kinder  
and MCHN

Alfredton opening Jan  
2024 – co-located with  
kinder and MCHN

Sebastopol late 2025 –  
co-located with Senior  
Citizens

Buninyong 2026/7





## Partnerships focus

- Expand the learning programs offered by leveraging local expertise
- Connect with hard to reach community groups
- Bring new groups into the library or Community Hub
- Take the library to other places – digital literacy, STEM Maker grant

# Working with internal networks

- Aging Well
  - Seniors Festival
  - Seniors Expo
- Youth Services
  - Popcon
  - Young Eventsters cooking program
- Art Gallery of Ballarat – currently closed for renovations so using the library for their children's education programs
- Children's and Family Services
  - Parent Place outreach
  - Aboriginal Children's Day
- Sustainable Environment
  - Thermal Camera and sustainable home programs, Electrify your home programs
  - Volcano Dreaming project
- Customer Experience
  - Snap, Send and Solve
- Emergency Management
  - Get Techy, Get Ready – preparing for emergencies



# Going beyond council

## Neighbourhood Houses

- 4 suburban Neighbourhood Houses
- Strong relationship with Wendouree – serving a very disadvantaged community
- Sharing resources and staff expertise
- Venue

## Western Bulldogs Football Club

- Bulldogs Read school literacy program

## Be Connected/Good Things Foundation

- Grants for digital literacy programs for over 50s

## The Brainary

- STEM Maker program

## Smart Living Ballarat and BREAZE

- Sustainability education
- Thermal cameras and other home energy equipment

## Ballarat Marathon

- Benefits of running for wellbeing

## Ballarat Autism Network

- Sensory Storytime



# Where to from here?

Developing new partnerships to offer a more diverse range of programs

Staged development of Community Hubs 2024-2027

Advocating for new, much larger library at Wendouree

New library in the Western Growth Zone (Delacombe)

Expansion of library services with innovative models and outreach services in outlying areas